



# Ivermectin

Practical Guidelines

# What is Ivermectin?

REVIEW ARTICLE

---

## Ivermectin: enigmatic multifaceted 'wonder' drug continues to surprise and exceed expectations

Andy Crump

Over the past decade, the global scientific community have begun to recognize the unmatched value of an extraordinary drug, ivermectin, that originates from a single microbe unearthed from soil in Japan. Work on ivermectin has seen its discoverer, Satoshi Ōmura, of Tokyo's prestigious Kitasato Institute, receive the 2014 Gairdner Global Health Award and the 2015 Nobel Prize in Physiology or Medicine, which he shared with a collaborating partner in the discovery and development of the drug, William Campbell of Merck & Co. Incorporated. Today, ivermectin is continuing to surprise and excite scientists, offering more and more promise to help improve global public health by treating a diverse range of diseases, with its unexpected potential as an antibacterial, antiviral and anti-cancer agent being particularly extraordinary.

*The Journal of Antibiotics* (2017) 70, 495–505. doi:10.1038/ja.2017.11. published online 15 February 2017

<https://pubmed.ncbi.nlm.nih.gov/28196978/>

# Ivermectin

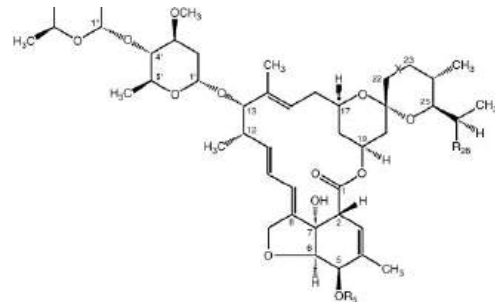
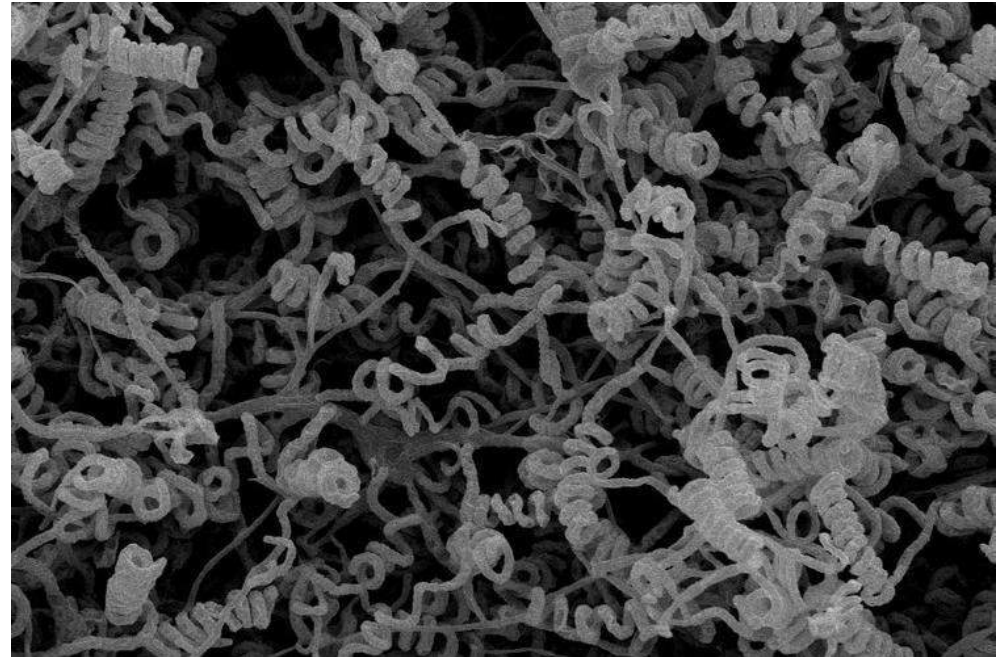
- An extraordinary drug that originates from a single microbe unearthed from soil in Japan.
- Discovered by Satoshi Ōmura, of Tokyo's prestigious Kitasato Institute.
- Received the 2014 Gairdner Global Health Award and the 2015 Nobel Prize in Physiology or Medicine, which he shared with a collaborating partner in the discovery and development of the drug, William Campbell of Merck & Co





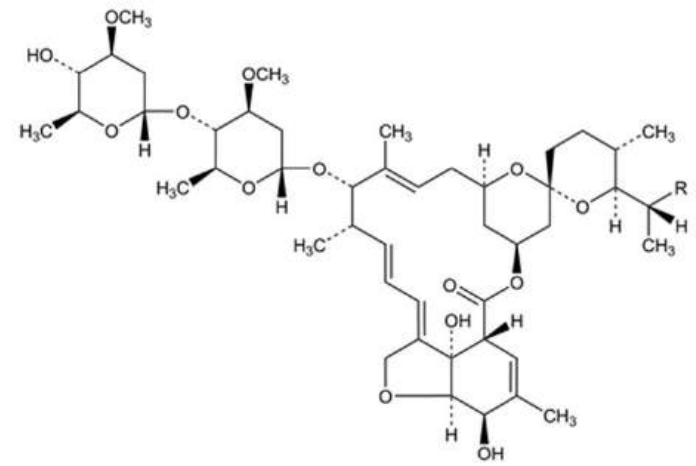
# Ivermectin

- >1,5 Billion doses dispensed helping 112 M people annually
- Predominantly an antiparasitic drug regarded as an essential drug by the WHO
- Regarded as the safest drug available for prescription



# Essential Medicine

- “Essential medicines are those that satisfy the priority health care needs of a population. They are intended to be available in functioning health systems at all times, in appropriate dosage forms, of assured quality and at prices individuals and health systems can afford.”



Component B<sub>1a</sub>, R = C<sub>2</sub>H<sub>5</sub>

Component B<sub>1b</sub>, R = CH<sub>3</sub>

# Ivermectin Uses

## PATHOGENS

Ant- Parasite

River Blindness

Elephantiasis

Scabies

Filariasis



# Ivermectin Uses

## PATHOGENS

Ant- Vector

Malaria

Bilharzia

Bedbugs

Sleeping Sickness



# Ivermectin Uses

## DISEASES

Asthma  
Epilepsy (ND)  
Tuberculosis  
Motor Neuron Disease  
Cancer

## DISEASES

All single stranded mRNA viruses  
Corona viruses  
Ebola  
Marburg  
GUT dysbiosis

Prevention Corona viruses  
0,2 per kg 2 x weekly

Post Exposure:  
0,4 mg per kg stat and after 2 days

Acute treatment Corona viruses

0,6 mg per kg daily for 5 days

Long Covid therapy  
Post vaccine therapy

1. Responders
2. Non responders

1. 0,3 mg per kg for 3 weeks
2. Increase to 0,6 mg per kg if response

Microbiome

IVM: 0,2 mg per kg for 1 month  
Combine with Vitamin C 4 grams per day  
Fermented foods, Spore biotics Probiotics

Parasite Treatments

Stat dose 0,2 mg per kg every 3 months

Cancer

1 mg per kg days 1, 3 and 11

Asthma  
TB  
Malaria etc.

How much do I weigh?		What dose does the protocol say?			
In pounds	In kilos	0.2 mg/kg	0.3 mg/kg	0.4 mg/kg	0.6 mg/kg
70–90	32–41	6-8 mg	10-12 mg	13-16 mg	19-25 mg
91–110	41–50	8-10 mg	12-15 mg	17-20 mg	25-30 mg
111–130	50–59	10-12 mg	15-18 mg	20-24 mg	30-35 mg
131–150	60–68	12-14 mg	18-20 mg	24-27 mg	36-41 mg
151–170	69–77	14-15 mg	21-23 mg	27-31 mg	41-46 mg
171–190	78–86	16-17 mg	23-26 mg	31-35 mg	47-52 mg
191–210	87–95	17-19 mg	26-29 mg	35-38 mg	52-57 mg
211–230	96–105	19-21 mg	29-31 mg	38-42 mg	58-63 mg
231–250	105–114	21-23 mg	32-34 mg	42-45 mg	63-68 mg
251–270	114–123	23-25 mg	34-37 mg	46-49 mg	68-74 mg
271–290	123–132	25-26 mg	37-40 mg	49-53 mg	74-79 mg
291–310	132–141	26-28 mg	40-42 mg	53-56 mg	79-85 mg

# Ivermectin for COVID-19

99 studies from 1,089 scientists  
137,255 patients in 28 countries

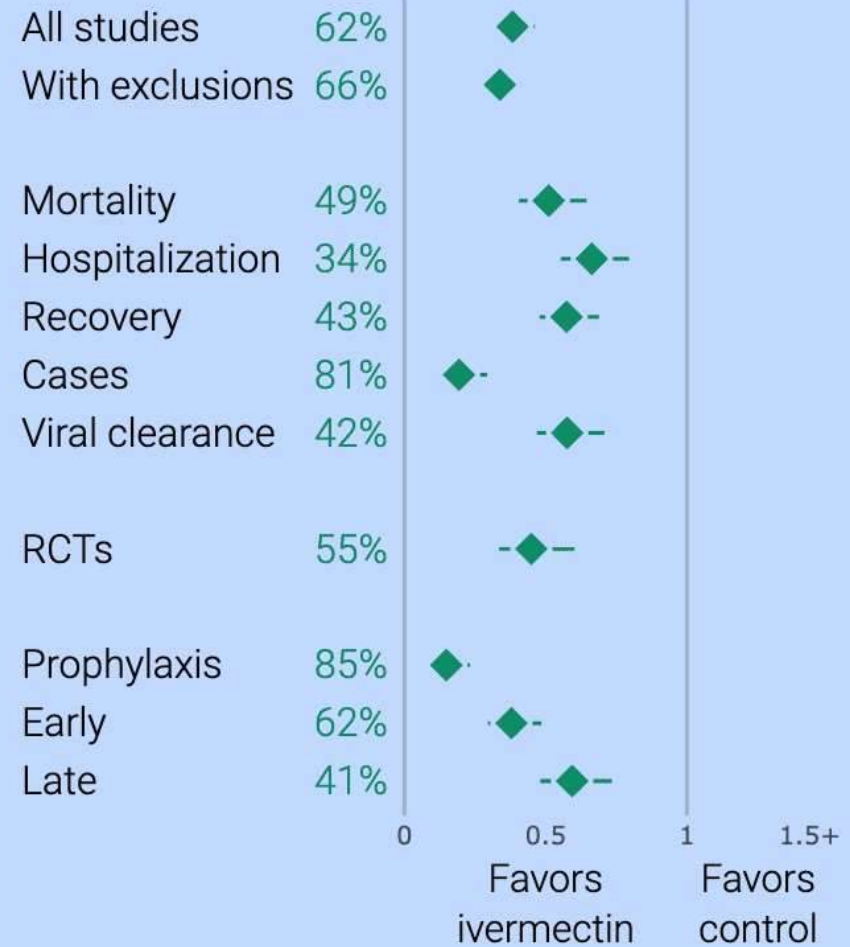
Statistically significant improvement for **mortality, ventilation, ICU, hospitalization, recovery, cases, and viral clearance.**

**85%, 62%, 41%** improvement for prophylaxis, early, and late treatment CI [77-90%], [51-70%], [27-52%]

**55%** improvement in **46 RCTs** CI [40-66%]

**49%** lower **mortality** from **51 studies** CI [35-60%]

COVID-19 IVERMECTIN STUDIES. AUG 2023. C19IVM.ORG



# Acute Viral Infection Essentials

Optimal Vit D Levels and Optimal metabolic wellness

Iodine / Ag nasal preparations (1% Solution)

Zn (100 – 200 mg per day)

Ivermectin

Vitamin C (2-4 Grams per day)

Azithromycin